

SEVENTY TIMES SEVEN

The Parish Magazine of the Seven Churches

St Peter Upper Slaughter – St Faith Farmcote – St James Cutsdean – St Andrew Naunton
St Mary Lower Slaughter – St Michael Guiting Power – St Mary Temple Guiting



SUMMER 2019 EDITION : Issue 144 : June/July/August

Rector: Rev'd Canon Katrina Scott
Tel: 01451 821777 or Email: krgscott@hotmail.com
Twitter : @KatrinaKrgscott

Rev'd Sue Cox (Associate Priest) - 01451 821641
Rev'd David Quin (Honorary Associate Priest) – 01608 651571
Jean Bird (Reader Emeritus) - 01451 605086
View online at www.achurchnearyou.com

Churches and School working together to share God's love in our communities

CHURCHWARDENS

Cutsdean (GL54 5RX)

Mark Evans 01386 584245
(Safeguarding Officer: Peter Forshaw)

Lower Slaughter (GL54 2HR)

(Vacant)
(Safeguarding Officer: Marion Marshall)

Naunton (GL54 3AX)

David Renney 07770 815023
(Safeguarding Officer: Barbara Steiner)

Temple Guiting (GL54 5RW)

Ali Clifton-Barnard 01386 584976
--- Deputy Wardens ---

Avril Vincent 01451 831599

Peter Forshaw 01242 602593
(Safeguarding Officer: Peter Forshaw)

Upper Slaughter (GL54 2JF)

Liz Gibson 01451 822118
Anthea Gough 01451 810370
(Safeguarding Officer: Ken Pascoe)

Guiting Power (GL54 5TY)

Michael Edwards 01451 850232
David Broad 01451 850713
--- Churchwarden Emeritus ---
Dorothy Watson 01451 850310
(Safeguarding Officer: Michael Edwards)

Farmcote (GL54 5AU)

Peter Loveday 01242 602887
(Safeguarding Officer: Michael Edwards)

SEVENTY TIMES SEVEN

Joint Editor

Revd Canon Katrina Scott 01451
821777

Joint Editor/Advertising/Production:

Karen Randles 01451 821964

Copyright © Seventy Times Seven

Articles may only be reproduced with the prior **written** permission of the author. The views expressed are not necessarily those of the Editors. The Editors reserve the right to edit articles submitted for publication and may not accept late submissions.

DEADLINE for the next issue
31 July 2019.

Seventy Times Seven is distributed free of charge to residents of the parishes. Otherwise, the charge is 50p per copy.

Temple Guiting Church of England Primary School

Head Teacher: Mrs Ann Barry

Tel: 01451 850304

www.templeguiting.gloucs.sch.uk

DEAR READERS ...

Welcome to our Summer edition, we hope you enjoy reading it and that you enjoy the wonderful events planned in our villages over the coming months. We would like to say a huge “thank you” to Liz Gibson for organising and running the recent refreshments weekend at Upper Slaughter to raise funds for our magazine, and to all who helped, provided cakes and supported the event from across the Benefice. With £573 raised, this was a marvellous result and very much appreciated.

DEAR FRIENDS ...

We have two great pieces of news to share with you from life around our Benefice:

Temple Guiting Church of England School have recently had their ‘Church School’ Inspection (SIAMS). The Inspector has written a very positive report and has concluded that we are **Good** in each area she inspected. She summed up our School saying, “Temple Guiting is ‘thriving’ as a learning community built on love”. Do go to the school website to see the full report – www.templeguiting.gloucs.sch.uk



In late June this year, our ministry team here will be joined by Rev’d Sue Pestell. Sue will be a Curate working across our Benefice for the next 3-5 years. Here are some words from Sue introducing herself:

“My name is Sue Pestell and I’m delighted to be serving my curacy among you in the Benefice of Seven Churches. I currently live in Winchcombe with my husband Rob, who is a Hospice Chaplain, and our youngest son James. We have two other children - Jonathan who is married to Zoë, and Andrew, married to Vikki. We also have three grandchildren.

I have spent the last three years in theological training on a regional course based in Gloucester, an experience I have enjoyed very much. One of the lovely parts of it was doing a ministerial placement alongside Katrina in your Benefice. Other things that I enjoy are being with people, historic buildings, a bit of walking, Sudoku, the sea, and cake. And of course the family.

I look forward to joining you in July.”

Please do come along and support Sue at her **Ordination** at Gloucester Cathedral on 30 June at 10.15am and welcome her at our **Benefice Welcome Service** at Temple Guiting at 6pm on Sunday 7th July!

Katrina, Sue, Jean and David

MORNING PRAYER IN THE BENEFICE

Mondays : 9.15am at Lower Slaughter

Tuesdays : 9.15am at Guiting Power

Wednesdays : 9.15am at Naunton

Thursdays : 9.30am at Temple Guiting (following Open the Book in School)

Fridays : 9.15am at Upper Slaughter.

If you would like to join in that would be lovely.

As part of our COMMUNITY MINISTRY we have shared in these special services ...

BAPTISMS

"May God guide and protect them"

Thomas NELSON at Temple Guiting on 7 March 2019

Lois BELL at Lower Slaughter on 14 April 2019

WEDDINGS

"May God bless them"

Ross WEST and Sophie MOTTRAM at Lower Slaughter on 30 March 2019

FUNERALS

"May God grant them light and peace"

Michael RATCLIFFE Funeral Service at Bourton-on-the-Water and

Burial at Lower Slaughter on 1 March 2019

Betty RUCKER Memorial Evensong at Upper Slaughter on 10 March 2019

Maureen VANDERPLANK Funeral and Burial at Farmcote on 26 April 2019

Ray MOSSON Funeral and Burial at Lower Slaughter on 17 May 2019

NEWS FROM THE WIDER CHURCH ...

A Prayer for Health

Here is a lovely prayer to use when you are thinking of a loved one who is going through a time of ill health:

*God of compassion and love,
we hold before you all those who suffer and those who care for them.
We pray especially at this time for those we love who are in pain.
Hold them in your strength and with your peace.
Bring them comfort and healing.
May they know your joy and your light.
Amen.*

Please do remember in your prayers Sue Cox, David Quin, Jean Bird and John Stanley, members of our Ministry Team here who are struggling with their health at the moment.

What is a Curacy?

Since we have announced that our Benefice will be celebrating the arrival of Rev'd Sue Pestell as a curate at the end of June, a number of people have asked me the question – "what does that really mean?"

A curate is a newly ordained person who comes to a group of parishes as a training post. It's a bit like an apprenticeship, where a curate comes to learn on the job. Sue will be a Reverend following her ordination at Gloucester Cathedral on 30th June, and for her first year works as a Deacon, before being made a Priest next year.

She will be working across the Benefice, sharing in ministry with Katrina. Please do introduce yourself to her and invite her to get involved in events happening in our communities.

Katrina Scott

WHAT'S ON IN THE BENEFICE ...



Village Open Gardens

Guiting Power - Sunday 2nd June, 2:00pm - 6:00pm

There's nowhere to go in Guiting ...

Pay a visit and help fund our Village Toilet in the Churchyard Project

View the varied gardens, meet the gardeners, savour the setting and enjoy our teas

Garden entry tickets: £6.00, accompanied children 16 years & under FREE

Tickets, Maps, Teas, Toilets and Parking at the Village Hall

Find us at GL54 5TX on your 'sat nav'.

GARDENS OPEN

Sunday 9 June 2019, 11am – 5pm

Do come and join us, we have **2** gardens open in aid of St Peters Church, Upper Slaughter. With all this glorious weather they are looking really lovely. The views, as always, are stunning – looking out over our truly wonderful countryside. There is plenty of parking and the majority of the two gardens are accessible for a wheel chair.

There will be homemade cakes and tea in the barn at Kirkham where you will be waited on by my grandchildren (always an experience!)

Kirkham Farm, Upper Slaughter, GL54 2JS

Fir Farm, Upper Slaughter, GL54 2RJ

Entrance £5, Children under 12 FREE

Naunton Classic & Vintage Transport Show and Village Fete

Sunday 14 July 2019, 12.00 – 16.00 hrs

Naunton Recreation Ground (SAT NAV Post Code GL54 3AS)

Awards for Best Pre-1940, pre-1970, pre-2000 cars.

Best pre- and post-war motorbikes.

‘The car I most want to take home’. “Vehicle of the day”

To register your vehicle contact: NauntonClassics2019@outlook.com

www.nauntonclassicandvintagetransportshowandfete.co.uk

£5.00 entry per vehicle in advance includes: driver and first passenger plus a cup of tea/coffee, bacon sandwich for the driver.

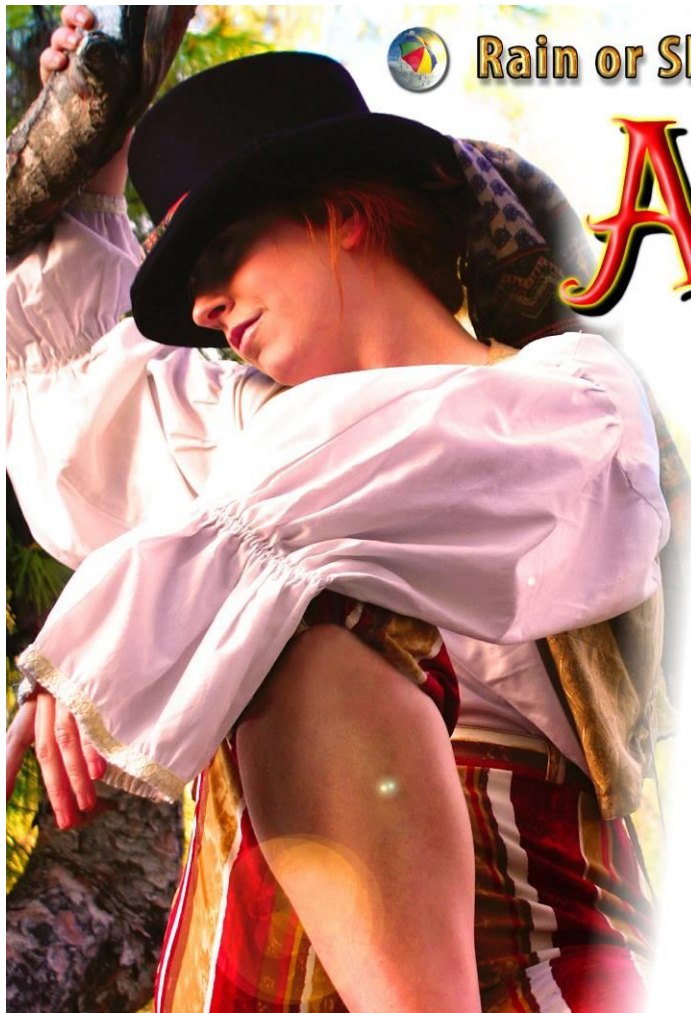
Additional bacon roll, tea/coffee £2.50.

Additional passengers £1.00 entry each, programme

Children's Games, Tombola, Bar-B-Que, Bar, Cream Teas, Stalls, Raffle

£1.00 entry and parking for non-entrants. Under-16s free.

All proceeds towards Naunton Village Charity Fund.



Rain or Shine Theatre Company present

As You LIKE IT

Al fresco
Summer
theatre

Temple Guiting House

Cheltenham, Gloucester. GL54 5RS

Sunday 1st September at 3:00pm

Tickets: adult £14, child £6 (u15)

Tel: 0330 660 0541

in person at 'The Pantry' village shop
or email stmarystempleguiting@gmail.com

Gates open 2pm for picnics * Please bring your own seating
In Aid of St Mary's Church * Tea & Scones available

NEWS FROM THE PEWS ...

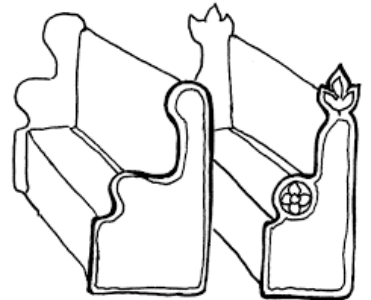
Temple Guiting

How lovely it is to see the trees in full blossom and the lovely young green leaves, and how amazing the sunshine has been so early in the year.

A large number of people crowded into the village hall for Party Pieces and had marvellous entertainment from the school children and adults. It's surprising what unknown talent there is in the village! Michael Bochman was an excellent compere and we all enjoyed the jacket potatoes for supper.

Easter was a beautiful occasion with the services well attended and the Church looking beautiful with all the Spring flowers. Now let's look forward to a lovely warm and happy Summer.

Audrey Mather



Naunton

Once again St Andrew's celebrated Easter with a family gathering on Good Friday during which as well as a short service, the children created an Easter garden and made various Easter themed items such as crosses and donkeys before finally joining in an Easter Egg hunt around the churchyard and then on Easter Day there was Holy Communion with Hymns. As this piece was being written plans were afoot for Ascension Day when St Andrew's was to be the venue for a Benefice celebration of Praise, Puddings and Prosecco - a first for Naunton - but otherwise the normal pattern of services is continuing, as is the weekly coffee shop and the monthly (except for August) rural cinema showings.

By the time you are reading this St Andrew's will have hosted the first of this year's Naunton Music concerts with more scheduled for June, July and September. And preparations will be in hand for the annual Spirit of Naunton service which once again, thanks to publican Jo Archer, is to be held in The Black Horse, this year on 16th June.

Events in and associated with the church are publicised in the village but if you want to know about future Naunton Music concerts or film showings, please contact Barbara Steiner for concerts and Bob Steiner for the cinema, both on 01451 850897.

Diana Woolley

Guiting Power

Easter Day "Sunrise Service" was a charismatic event, it was warm, not a breath of wind, and right on time just as Rev Katrina started The Eucharist, the sun broke over the hillsides! A good group of 25 hardy souls appeared for the 6am service in the Church Yard and afterwards we all enjoyed fellowship, tea, coffee and bacon and sausage sandwiches with Mrs Watson's crusty bread - what a way to celebrate Easter Day!

The Bric a Brac sale in the Churchyard and Teas in the Church on Easter Monday went well, raising approximately £380 for Church and Parish Share Funds. Thanks to all that donated books and bric a brac, what a great help this is in finding the money to keep the doors of St Michael's open. If you want to donate any bric a brac or books from around the parishes, contact Mike on 07786 483114.

We are all so pleased that Church Stalwart Peter Weale has had his long awaited operation and is feeling much better. Peter and his wife Pat have played such a significant role in the running of St Michael's in recent years.

Our best wishes go out to our Church Warden Emeritus, Mrs Dorothy Watson, as she struggles with diminishing sight and some minor ailments. What a doughty

competitor she is in life, never giving way to anything or anyone! The whole village is preparing to celebrate Dorothy's 100th birthday in November 2019.

We hope that fine weather blesses the two walks from Lower Slaughter and Farmcote to Guiting Power on Rogation Sunday May 26th. Great thanks from the benefice to Nick Bumford and his staff at Guiting Manor Farms for once again facilitating the atmospheric "Barn Service" afterwards.

Looks like you have the same old team running St Michael's and All Angels for the next year, all returned again for another term at the Church AGM! We have an excellent team in place, but don't be too complacent as we are an ageing group! As most Churches do, we need an injection of younger blood.

Mike Edwards

Do you shop on-line? Would you like to help us with our ministry costs at Guiting Power? How about signing up to easyfundraising – the UK's biggest charity shopping fundraising site. You can collect free donations for the Church every time you buy something on-line without costing yourself an extra penny.

Please use the following link to find out more:
www.easyfundraising.org.uk/causes/stmichaelandallangelschurch1.

Upper Slaughter

Although Lent is some time ago now it was good to have so many people join together for the soup lunches. Thank you for supporting this and for the donations which go to the Food Bank.

We also thank those who helped decorate the church ready for Easter, when the sun shone and the church was full.

Do join us on 30th June, for the evensong service to celebrate St Peter's day, everyone will be most welcome.

Our Fete this year is on 13th July, and we thank James for bringing this altogether again this year.

Liz Gibson

Cutsdean

I am writing this on the very last day of April – it being not only the deadline for this edition of our much loved Benefice magazine but also the final day of the "Customer Vote" for our grant from the Tesco Bags of Help Scheme. Thank you to all who took the trouble to collect the tokens and vote accordingly. From early on it was clear which project was in line for the main prize – the Stow Poppy Factory of the Royal British Legion, but the race for second place was much closer between St. James' and Sherborne Primary School.



Benefice Services – JUNE 2019



Time	Village	Service
First Sunday	2 June 2019	7th Sunday of Easter
9.30am	Temple Guiting with Guiting Power	HC
9.30am	Naunton	HC BCP
11.00am	Upper Slaughter with Lower Slaughter	HC BCP
Second Sunday	9 June 2019	Pentecost
8.30am	Naunton	HC BCP (Said)
9.30am	Lower Slaughter	HC
9.30am	Farmcote with Cutsdean	HC (Said)
11.00am	Temple Guiting	Eleven4All
11.00am	Upper Slaughter	Matins BCP
6.00pm	Guiting Power	Benefice Evensong
Third Sunday	16 June 2019	Trinity Sunday
8.30am	Upper Slaughter	HC BCP (Said)
9.30am	Cutsdean with Temple Guiting	HC (Said)
11.00am	Lower Slaughter	HC
11.00am	Naunton	Spirit of Naunton Service at The Black Horse
6.00pm	Guiting Power	Songs of Praise
Fourth Sunday	23 June 2019	1st Sunday after Trinity
8.30am	Guiting Power	HC (Said)
9.30am	Cutsdean with Farmcote	HC (Said)
11.00am	Lower Slaughter	Family Worship
11.00am	Temple Guiting	Choral HC
Fifth Sunday	30 June 2019	St Peter's
10.00am	Naunton	Benefice HC
6.00pm	Upper Slaughter	Patronal Evensong

Benefice Services – JULY 2019

Time	Village	Service
First Sunday	7 July 2019	3rd Sunday after Trinity
9.30am	Naunton	HC BCP
11.00am	Guiting Power	Family Service
11.00am	Upper Slaughter with Lower Slaughter	HC BCP
6.00pm	Temple Guiting	Benefice Welcome Service
Second Sunday	14 July 2019	4th Sunday after Trinity
8.30am	Naunton	HC BCP (Said)
9.30am	Lower Slaughter with Upper Slaughter	HC
9.30am	Farmcote with Cutsdean	HC (Said)
11.00am	Temple Guiting	Eleven4All
6.00pm	Guiting Power	Benefice Evensong
Third Sunday	21 July 2019	5th Sunday after Trinity
8.30am	Upper Slaughter	HC BCP (Said)
9.30am	Cutsdean with Temple Guiting	HC (Said)
11.00am	Lower Slaughter	HC
11.00am	Naunton	Matins BCP
6.00pm	Guiting Power	Songs of Praise
Fourth Sunday	28 July 2019	St James'
8.30am	Guiting Power	HC (Said)
9.30am	Cutsdean with Farmcote	Patronal HC (Said)
11.00am	Lower Slaughter	Family
11.00am	Temple Guiting	Choral HC

**Occasionally it is necessary to alter services at very short notice.
Please accept our most sincere apologies for any inconvenience should
this occur.**

Benefice Services – AUGUST 2019

Time	Village	Service
First Sunday	4 August 2019	7th Sunday after Trinity
9.30am	Temple Guiting	HC
9.30am	Naunton	HC BCP
11.00am	Upper Slaughter with Lower Slaughter	HC BCP
6.00pm	Guiting Power	Songs of Praise
Second Sunday	11 August 2019	8th Sunday after Trinity
8.30am	Naunton	HC BCP (Said)
9.30am	Lower Slaughter	HC
9.30am	Farmcote with Cutsdean	HC (Said)
11.00am	Temple Guiting	Eleven4All
11.00am	Upper Slaughter	Matins BCP
6.00pm	Guiting Power	Benefice Evensong
Third Sunday	18 August 2019	St Mary's
8.30am	Upper Slaughter	HC BCP (Said)
9.30am	Cutsdean with Temple Guiting	HC (Said)
11.00am	Lower Slaughter	HC
11.00am	Naunton	Matins BCP
11.00am	Guiting Power	Family Service
Fourth Sunday	25 August 2019	10th Sunday after Trinity
8.30am	Guiting Power	HC (Said)
9.30am	Cutsdean with Farmcote	HC (Said)
11.00am	Lower Slaughter	Patronal Family Worship
11.00am	Temple Guiting	Choral HC

**Occasionally it is necessary to alter services at very short notice.
Please accept our most sincere apologies for any inconvenience should
this occur.**

The highlight of our early spring was the visit by the Archdeacon of Cheltenham, the Venerable Phil Andrew, who joined us for a benefice Family Worship for Mothering Sunday. A congregation of around 30 from across the parishes heard an inspiring sermon from Phil preceded by a display of the headgear he collects on his travels encouraging us to identify the origins.

As we move into Spring, we have a fine crop of lambs in the field behind the Church to remind us of God's influence in the constant new beginnings that transcend the farming year and into our gardens. It is also the time when the rotas for keeping our church flourishing come into play and thanks are due to all those from Cutsdean and beyond who make St. James' so welcoming for everyone.

Mark Evans

Lower Slaughter

As you read this hopefully summer will have arrived, bringing long, sunny days.

At St Mary's we all enjoyed our Easter celebrations and meeting with our Benefice church family for Lent lunches, talks and services. How uplifting to spirits it was to open the door on Easter Sunday and see the Church ablaze with springtime colours from our floral displays.

Our Annual Parochial Church Meeting has taken place and we are very sad that Roger Baggott has stood down as Churchwarden and Treasurer due to his and Diane's forthcoming move to pastures new. We thank them very much for the stalwart work they have done for St Mary's over the last 10 years, and for the numerous hours Roger has devoted to keeping our finances in good order and our Church well maintained. May God bless them both with health and happiness in their new chapter of life and we hope they will join us occasionally in worship.

Recently our village was used to film scenes for "Emma" and our Church provided refuge for cast and crew. We all eagerly await the release of the film.

Plans are well underway for our Village Fete on August Bank Holiday Monday. Do join us as it is always a fun-filled day with traditional stalls, entertainment and refreshments.

Soon schools will be breaking up and the holiday season will be in full swing. We wish everyone "Happy Holidays" and the children a time of many adventures.

Marion Marshall

Farmcote

This year we celebrated a family Easter Service in a huge late Victorian church in Hackney where our son John and family had been warmly welcomed on return from Brazil last autumn. In east London the Church has staged a remarkable

revival with many large congregations in refurbished buildings. Before the Service we were introduced to several 'professional' people with children; among the people of mixed race and backgrounds even Spanish was spoken. The congregation must have numbered +150. The traditional Eucharist, taken in modern language, was interspaced with pleasant live music from several musicians (singers, guitarists, drums, oboe and keyboard) and easy singing along from words on a large screen. The children ran around tugging at microphone and lighting wiring. We were addressed at the beginning by the Vicar with the Happy Message, and in the middle and end of the Service by several others in a more 'charismatic' manner. [On a normal Sunday there were two services – one for the older members, a traditional HC and another the same, but with music etc.] This new experience for us lasted an hour and a half followed by coffee and cakes prepared at the rear of the building. The separate meeting rooms there were well laid out and provided a popular meeting place designed for a largely young community and certainly not for a dying institution.

Peter & Sarah Loveday

Temple Guiting School

Temple Guiting's got Talent! A few of our very keen Year 6 children decided to organise a talent show as they felt we had a lot of talent in the school. They organised 3 lunchtime audition sessions and then the organising committee of 6 pupils put 10 acts through to the finals. Encouraging feedback and a certificate for all the acts were given and the talent show organised with parents invited to the Village Hall along with the whole school one Friday afternoon. There were a variety of acts ranging from amazing gymnastic routines to a Michel Jackson style dance act, solo singing to dramatic book reading. The final winner was a Year 6 comedian, who not only performed a stand-up routine but also wrote a comedy song and played the piano while singing. It was a very noisy and enjoyable afternoon and we recommend you watch out for some of our pupils in the future, there is definitely a lot of talent in Temple Guiting! There are lots of pictures on our twitter feed if you want to check it out @TempleGSchool.

The daily mile has recommenced. Once again we are so very thankful for the incredibly beautiful surroundings we are blessed with at the school. This is often most apparent, when first thing in the morning, most of the school and as many staff as possible do our morning walk. If we do 3 times around the edge of the recreation field it is a mile. Some of us run, some of us walk, some parents and even a few dogs join us. It is a wonderful way to start the day and helps us have a healthy body as well as healthy minds



Easter Experience On a very wet and windy April day we had the privilege of once again taking part in the Easter Experience led by Vicar Katrina and Nick Scott. It was a 2-hour, completely interactive programme that engaged our pupils from the youngest four year olds to our Year 6 pupils, for whom the Easter experience workshops have become a very much loved tradition. There were videos, crafts, drama, discussion, Bible readings, dressing up and of course trying unleavened bread. It was fantastic morning that really did bring the story of Easter to life.

Ann Barry, Headteacher

COMMUNITY NEWS ...

Guiting Power Pre-School Playgroup - spaces available

Guiting Power Pre-School Playgroup provides quality childcare and pre-school education for children from 2 to 5 years during term time.

Set in the spacious and well-equipped Old School Building in the beautiful village of Guiting Power, our emphasis is on learning through play and children benefit from a lovely, large, safe playground.

We run term time 9am-3pm, however early drop off and late pick up are also available subject to arrangement. We offer full and part-time places and accept Government funding for 2, 3 and 4 year olds.

Our qualified, experienced staff offer a stimulating, caring and safe environment for play and exploration. We follow the principles laid out in the Early Years Foundation Stage (EYFS) curriculum and work under the EYFS guidelines, meaning your child will find plenty to interest and challenge them.

We offer music and movement classes through Boogie Beat and football with Supa Strikers coaches. We also run outdoor learning sessions making the most of adventures in the surrounding countryside and visits to the local farm.

We are supported by a voluntary committee of parents and local business people and also have close links with Temple Guiting Primary School and Cold Aston Primary School.

Contact us on 01451 851742 to arrange a visit or come and see us during our Open Morning on 5th June, 9.30-11.30am. Our Stay and Play group, open to children aged 0-2 and carers, also runs every Wednesday morning 9.30-11.30am. There is no need to book, just turn up on the day.

For more information visit www.guitingpowerpreschool.co.uk or find us on Facebook.

Emma Bovill

Lent Lunches donate to the Foodbank

During the season of Lent this year, our church communities gathered together for some lovely lunches on a weekly basis. It was a great opportunity to meet with friends and enjoy some homemade soups. Donations were made to cover the costs and to support those who are hungry in our area. We are delighted to report that we have been able to send a donation of £210 to the North Cotswold Foodbank.



Local charity **Cotswold Friends** is delighted to announce the addition of a Wheelchair Accessible Vehicle to its Community Transport Service. This service is much needed in the North Cotswolds and will provide wheelchair users with access to safe, reliable transport.

Coffee Shop

Every Thursday 10.30am-12.30pm in **Naunton Church**

Coffee at the West End

2nd & 4th Saturdays 11am-12noon
in **Temple Guiting Church**

ALL WELCOME

SEVENTY TIMES SEVEN

Future copy deadlines

Sept/Oct/Nov edition – **31 July**

Dec/Jan/Feb edition – **31 October**

Mar/Apr/May edition – **31**

January

Jun/Jul/Aug edition – **30 April**

Advertising costs

1/8 page = £55.00 per annum

1/4 page = £85.00 per annum

1/2 page = £155.00 per annum

Full page = £300.00 per annum

Adverts are normally placed for a year, but we are happy to accept one-off or part-year subscriptions.

Hardwood Seasoned Logs for Sale

Large load delivered – Guiting Power only £150
Deliveries outside Guiting Power – up to 8 miles
£160

All Prices include VAT @ 5%

Guiting Manor Farms Ltd
01451 850320 or 07816 499370
gmf@guiting.org.uk
www.guitingmanorfarms.co.uk

David Moore Family Butchers Ltd

Game Specialist

The Forge, High St. Mickleton, Chipping
Campden, Gloucestershire, GL55 6SL

Local Deliveries
Tel: 01386-438288 Mob: 07917 640311

KENDALL & DAVIES SOLICITORS

Established 1742

- Conveyancing
- Leasehold Transactions & Enfranchisements
- Matrimonial & Divorce
- Probate, Wills & Trusts
- Company & Commercial Advice
- Inheritance Tax Planning
- Litigation

Bourton-on-the-Water: 01451 820277

Moreton-in-Marsh: 01608 650312

Burford: 01993 822025

Stow-on-the-Wold: 01451 830295

www.kendallanddavies.co.uk

**The Mobility Store**

Make life easier

On the move Large range of mobility aids Mobility scooters Hire services; Stairlifts	Rise and recline chairs Footcare Cosyfeet shoes and slippers Footcare appointments
---	--

Free **hearing** health check

www.thehearingandmobilitystore.co.uk
Bourton on the Water 01451 810088 Wroughton 01793 815083
Marlborough 01672 511550

Paul Brookes MCFHP MAFHP

Foot Health Professional

Fully Qualified & Insured



For all your foot health needs
Including treatment of:

Callus • Verrucas • Ingrown Toenails
Corns • Nail Cutting • Fungal Nail

Tel: 01451 810981 Mobile: 07725 185843

Visiting Practice brookes1977@yahoo.co.uk

JOHN BETTS Property Maintenance

General building, small extensions,
brickwork, stonework, lime pointing,
painting and general maintenance. Free
friendly no obligation quote or advice.

25+ years experience

Tel: 01386 761379 or 07415 144926

Email: Johnbetts9@sky.com

WP

Williams-Price Property



Independent Cotswold Letting Agents

- 21 years local experience
- Competitive rates – No VAT
- All necessary legal aspects of letting covered
- Loyal client portfolio

****6 months free management with this advert****

(Terms and conditions apply)

TEL: 01451 850224 | Email: nataliewilliamsprice@gmail.com



Mallams

1788

Free Valuation Mornings

Every Tuesday 9am - 1pm No appointment necessary

At Grosvenor Galleries

26 Grosvenor Street, Cheltenham GL52 2SG

Enquiries: 01242 235712 or
cheltenham@mallams.co.uk

www.mallams.co.uk

A Chinese porcelain figure of Avalokitesvara
Sold recently for £5500

AUCTIONEERS AND VALUERS SINCE 1788

ALLEN & SON

Professional and Qualified Funeral Director

Providing a considered and appropriate service with a refreshingly normal approach.

We offer a complete pre-planning service, including pre-payment plans through Golden Charter, a company specialising in bespoke planning for independent funeral directors.

For more information, please phone at any time, call into our office or look at our website.

Bank View, High Street,
Moreton-in-Marsh, GL56 0AF.

01608 650633 – 24-hour service
www.allenfunerals.co.uk

Colin James

PAINTER & DECORATOR

City & Guilds Trained
With Years of Experience

Please tel: 07973 159820

J. TAYLOR Vehicle Services

Mobile Servicing that comes to you.

All makes. 30 years in motor trade.

Vehicle diagnostics + electrics.

Vehicle inspection. Dealer trained.

No VAT

Jonathan Taylor AAE, MIMI

01242 675650 or 07850 686847

AND FINALLY ... DELICIOUS YORKSHIRE PUDDINGS!

5 oz Plain flour Pinch of salt 2 eggs ½ pint milk 1 tablespoon water

Mix flour, salt, make a well in the middle and drop in eggs, add half of the milk and beat until smooth. Add remaining milk and beat until well mixed.

In a bun tin, put 1 teaspoon of oil in each space, add 2 tablespoons of mixture in each, place in preheated oven at 220°C and cook for 20 mins.

Eat straight away or cool and freeze.

Useful Telephone Numbers

Doctors

Stow-on-the-Wold	01451 830805
Bourton-on-the-Water	01451 820242
Broadway	01386 853651
Winchcombe	01242 602307

Hospitals

Cheltenham General	0300 422 2222
Cirencester	01285 884584
Winchcombe	01242 602341
Moreton-in-Marsh	0300 421 8770

Police

Cotswold District	101
In emergencies dial	999

Outreach Post Offices

Guiting Power	01451 850701
Tues 10.00am – 1.00pm, 1.30pm – 5.00pm &	
Thurs 1.30pm – 5.00pm	

Gas Emergency

National Gas	0800 111 999
--------------	--------------

Water Emergency

Thames Water	0845 920 0800
Severn Trent	0800 783 4444

Electricity Emergency

Central Networks	0800 328 1111
------------------	---------------

Council Offices

Cotswold District (CDC)	01285 623000
CDC, Moreton-in-Marsh	01608 650881
Glos County Council	01452 425000

Roads (Gloucestershire)

To report a problem	08000 514514
---------------------	--------------

Libraries

Stow-on-the-Wold	0845 230 5420
Moreton-in-Marsh	01608 650780
Winchcombe	01242 602772

Citizens Advice Bureaux

Cheltenham/Tewks	01242 522491
Cirencester	01285 652908

The Samaritans

Cheltenham	01242 515777
Gloucester	01452 306333
Nationwide	0845 790 9090
For Hard-of-Hearing	0845 790 9192

Cotswold Volunteers North

To volunteer	01608 651415
Befriending & carer respite services	01608 652019
Community transport	01608 651115
Lunch clubs	01608 651415